

EMCO Weld Nipples Type SK for Thermowells and Sampling Probes

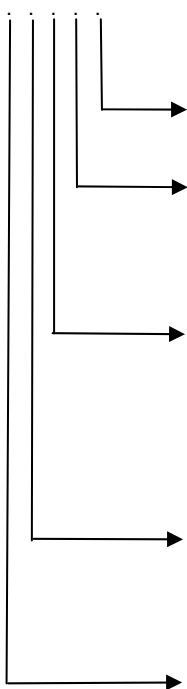
Principle

The EMCO weld nipple reinforces the area of the pipe and the thermowell to compensate the area of pipe removed. The weld nipple is designed according to EN, ASME 3 or TRD DIN to meet required service conditions.

Before welding the area of welding is to be cleaned to bright surface. The pipe work is drilled with a 10 mm drill in the depth of 8 mm. After welding the nipple is drilled through to 17,8 mm or 23,8 mm depending on size of thermowell. A \varnothing 18 or \varnothing 24 mm rival finish the hole to H7.

How to order

SK



- 1 length : 45 mm
- 2 length : 80 mm
- 3 length : special

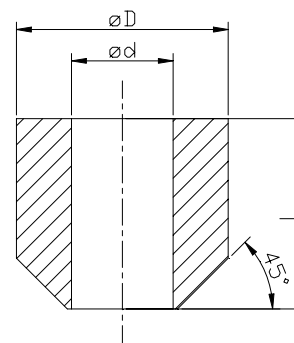
- 5 \varnothing : 50 mm
- 8 \varnothing : 80 mm

- 0 for type 2 and type 3
- 8 for 18 mm thermowell
- 4 for 24 mm thermowell
- 9 for special diameter

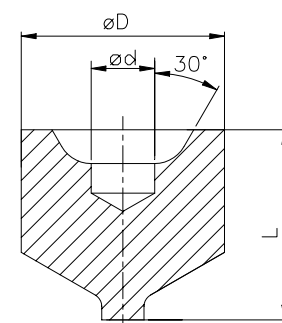
- B 16Mo3
- C P250GH
- K AISI 316(Ti)
- L 13CrMo4-5
- M 10CrMo9-10
- P X10CrMovNb9-1
- S Specify

- 1 type 1
- 2 type 2
- 3 type 3

Type 1



Type 2



Type 3

