

## EMCO Sight Flow Indicators Type EFG

### Principle

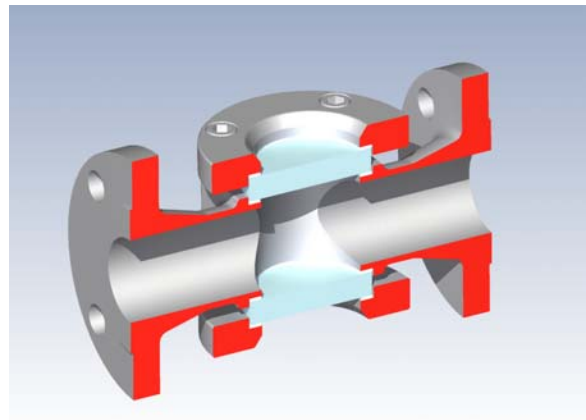
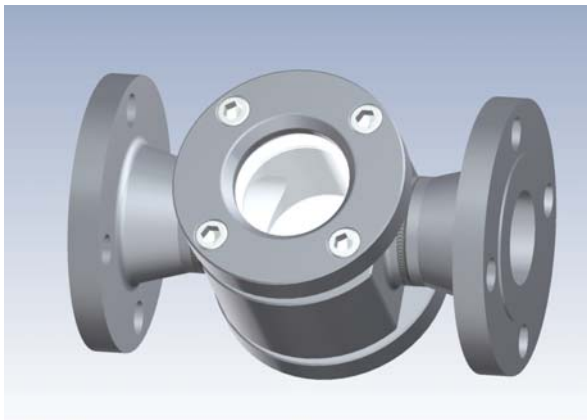
EMCO sight flow indicators are used for locally checking the liquid flow passing in pipe lines.

### Construction

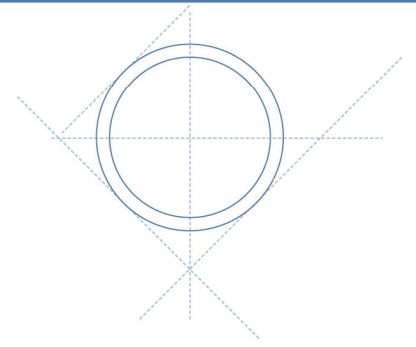
The EMCO sight flow indicator has a double glass construction – a look through design. The sight glass is toughened or borosilicate glass depending on operating temperature. The flow indicator is made from bar stock material and is therefore available in all machinable materials.

The EMCO sight flow indicators are fully in compliance PED 97/23 EC

- Sizes : DN 15 - 100, ½" - 4".
- Pressure rating : PN 10 - 40, 150 - 300 lbs
- Temperature : Toughened glass max 150 °C.  
Borosilicate glass max 300 °C.
- Connection : Flanged according to DIN or ANSI standards,  
Threaded, up to 2"  
Butt weld or socket weld ends to DIN or ANSI standard
- Flange standards : Flanges with flat or raised face according to DIN 2526, 2513 or  
2512, RF according to B 16.5
- Materials : Carbon steel, Stainless steel, Duplex Super Duplex, 6Mo  
Hastelloy C276 or 22, Titanium



0-07-007-1e



**Options**

- Lining : The body can internally be lined with Halar or PTFE
- Paddle wheel : For flow indication
- Flap : For flow rate indication

**Accessories**

Illuminators

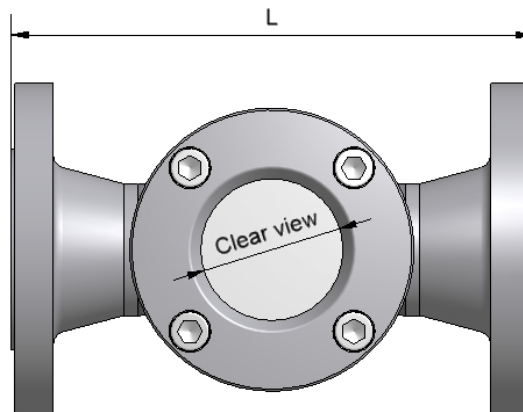


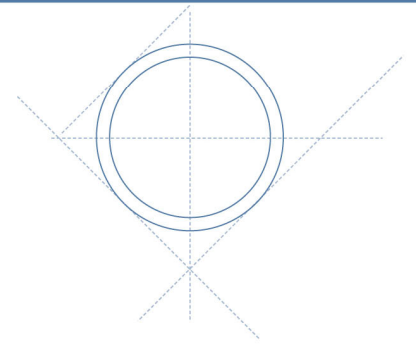
**Advantages**

Roughed design, high quality glass

Dimensions:

Size		Clear view	Overall length			
			ANSI 150 lbs	300lbs	DIN	Threaded or Weld end
DN 15	1/2"	32 mm	182	190	155	78
DN 20	3/4"	32 mm	182	190	160	78
DN 25	1"	32 mm	182	190	160	77
DN 32	1 1/4"	32 mm	192	200	165	77
DN 40	1 1/2"	65 mm	240	250	210	127
DN 50	2"	65 mm	240	250	225	126
DN 65	2 1/2"	65 mm	240	250	280	125
DN 80	3"	65 mm	300	315	290	145
DN 100	4"	65 mm	310	325	305	143





## Sight Flow Indicator coding

### 1. Type

Look through	code	EFG-1
Look through with paddle wheel	code	EFG-2
Look through with flap	code	EFG-3

### 2. Size

DN 15	code	015
DN 20	code	020
DN 25	code	025
DN 32	code	032
DN 40	code	040
DN 50	code	050
DN 65	code	065
DN 80	code	080
DN 100	code	100

### 3. Connection

DIN flange	code	10
ANSI flange	code	20
Butt weld ends	code	30
Socket weld ends	code	40
BSP thread	code	50
NPT thread	code	60

### 4. Pressure rating

Thread/weld end conn.	code	00
PN 16, DIN std.	code	16
PN 40, DIN std.	code	40
150 lbs, ANSI std.	code	15
300 lbs, ANSI std.	code	30

### 5. Facing

Thread/weld end conn.	code	00
DIN 2526 Form A	code	26
DIN 2513 Form R13	code	13
DIN 2512 Form N	code	12
Raised face RF, ANSI standard	code	RF
Flat face FF, ANSI standard	code	FF

### 6. Material

Carbon steel	code	01
AISI 316	code	02
Duplex	code	03
Super Duplex	code	04
6Mo	code	05
Hastelloy C	code	06
Titanium	code	07
Monel	code	08
Inconel	code	09

### Examples

2" Sight Flow Indicator look trough with ANSI flanges,  
150 lbs  
with RF flange facing in 6Mo material

**EFG-1-050-20-15-RF-05**