

EMCO+ Needle Valves type RV 400

Principle

Emco+ needle valves type RV 400 are used as primary shut-off valves in connection with primary elements (orifice plates, venturis etc.)

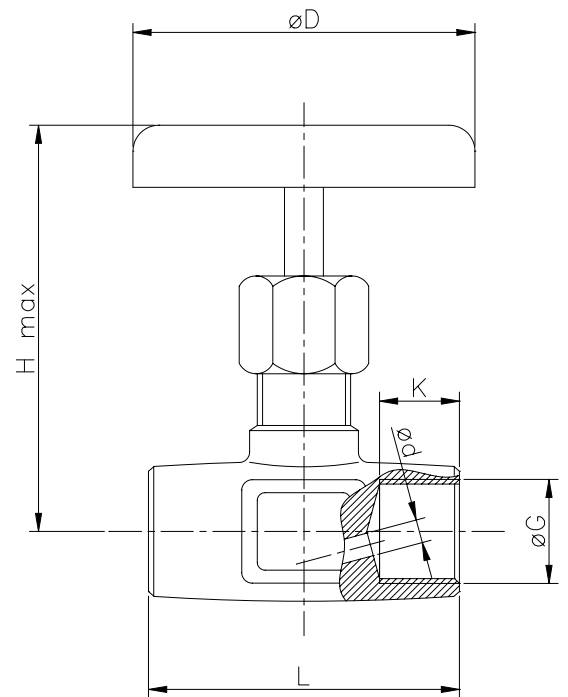
Construction

The valve body is drop forged in one piece. The valves are supplied with BSP or NPT threads, weld ends for butt-welding or socket-welding. The stuffing box is external to valve spindle thread.

The valves are pressure tested to 600 bar.

Technical Data

- Material : Stainless Steel AISI 316, 17%Cr.steel
- Packing : Graphite.
- Hand wheel : Pressed steel.
- Connection : 1/4", 3/8", 1/2" BSP or NPT tapered threads int. $\varnothing 12, \varnothing 14, \varnothing 16, \varnothing 21.3$ mm int.
- Pressure rating : PN 400
- Temperature : max. 300 °C.



Pressure	400	160	125	20	bar
Temperature	20	125	200	300	°C

DN	G	K	d	L	D	Hmax	Weight kg	Kv value
8	1/4	14	5	60	65	85	0.40	0.42
10	3/8	15	5	60	65	85	0.38	0.42
15	1/2	16	5	60	65	85	0.34	0.54